

RSL0605

Resolute™ Strength Selectorized Line

Leg Extension III

Biomechanically Sound

Before performing the quadriceps contraction on the Resolute Leg Extension, exercisers can easily adjust the ankle pad to the optimal position for a comfortable lift.

Designed to Go the Distance

Chrome-plated linkages not only make adjustments smoother and easier, the high-quality material contributes to a more durable product. Tested to 250,000 cycles using the full weight stack, the Resolute Leg Extension is designed to go the distance.

Focused on the Experience

With intuitive, conveniently placed adjustments, and a wide comfortable seat, the Leg Extension is quickly adjusted to fit most every exerciser. Exercisers can adjust the weight stack selection easily from the seated position.

Advanced Training with Sony® Advagym

Strength training has gone digital. Add the Sony Advagym training and tracking system, along with the app, to give your exercisers a whole new way to train. Through the Advagym app, personal trainers can prescribe workouts and monitor their clients' progress.



Specifications

Dimensions (L x W x H): 61 x 50 x 58 in / 155 x 127 x 148 cm

Weight Stack Tower Height: 58 in / 148 cm

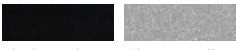
Equipment Weight: 616 lb / 280 kg

Weight Stack: 240 lb / 109 kg

Warranty: Visit www.precor.com for warranty terms.

Color Options*

Frame



Black Pearl

Gloss Metallic Silver

Upholstery

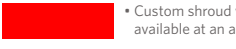


All Spice

Black

Grey

Shroud



Tungsten

* Custom shroud wraps are available at an additional cost.

Additional Upholstery Options**



American Beauty

Blue Jay

Burgundy

Deep Clay

Hunter Green



Navy

New Purple

Regal Blue

Slate

*Colors may vary.

**Additional lead time applies.